

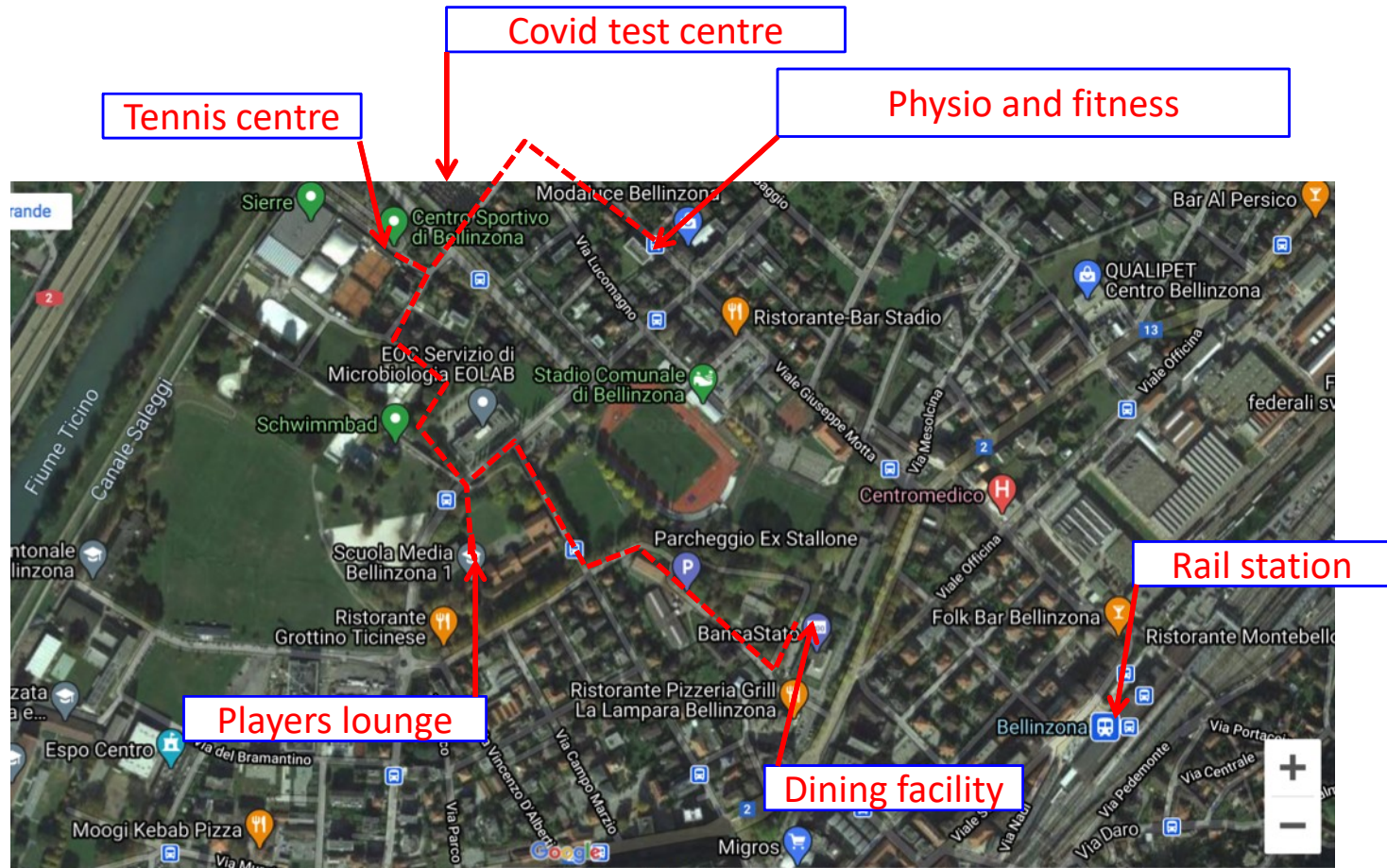


ITF W60 tournament Bellinzona, 4 -11 April 2021 Map and facilities

20 March 2021

www.itf.com/worldtennistour

Tournament facilities plan

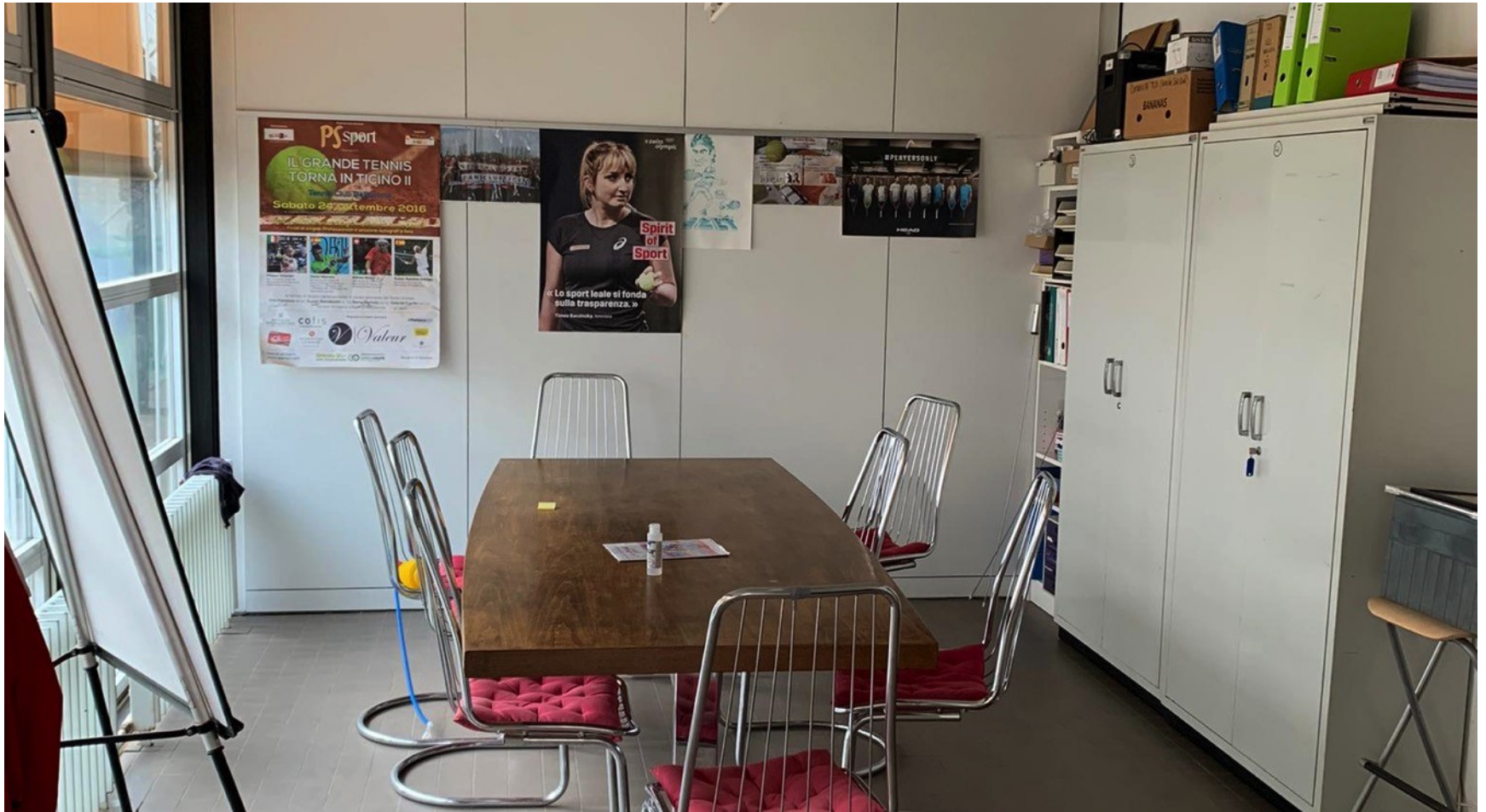


Distance 500 m



Way on foot

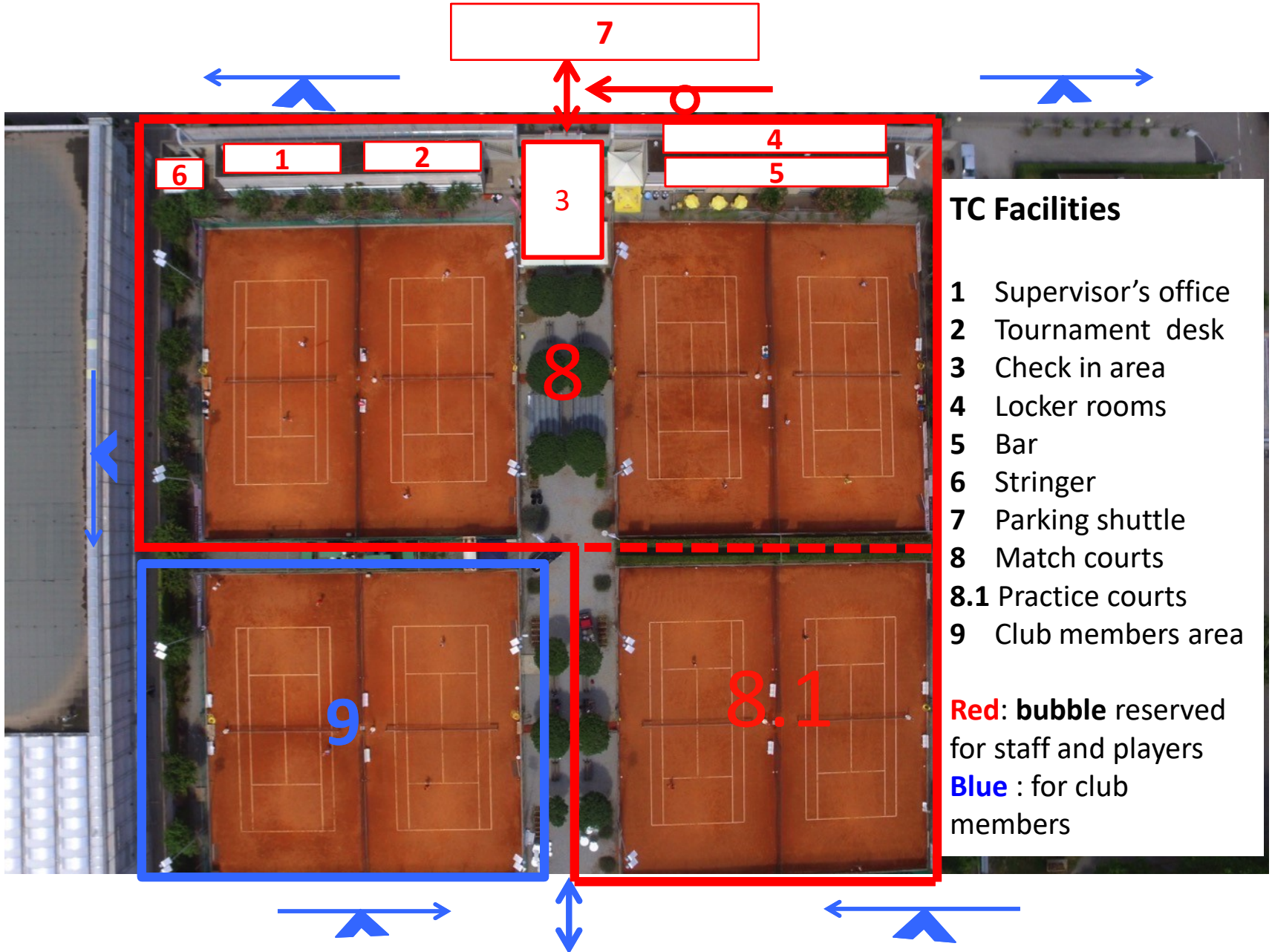
Supervisor's Office



Tournament Desk



Protection plan



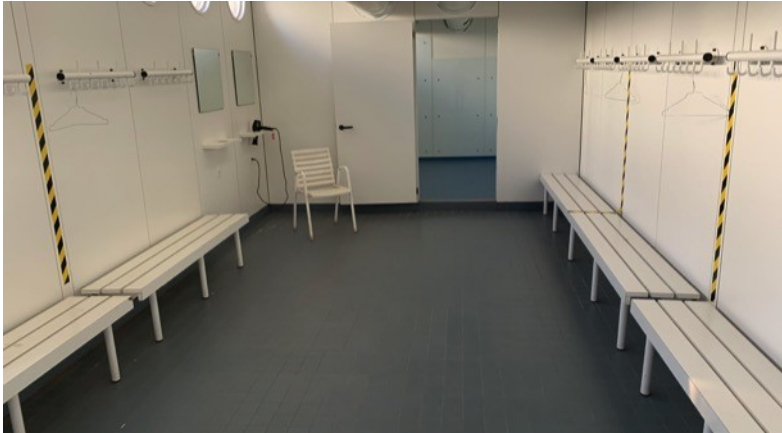
Covid measures

A sanitizing **Smart Gate** will be used for temperature screening, contact tracing and sanitizing with Ozone. Everybody will be Covid «rapid» tested at the beginning of the tournament.

All the players and the staff and volunteers will be provided with special protection masks.



Locker rooms



Bar inside the tennis centre



Dining facility (for players only)



Players lounge

(5 min walk)



Physio and fitness studio



Alfio Albasini

PT, PostGradManipTherap

Private Practitioner

Inst McConnell, Neurodynamic Solutions (NDS)

Member of CEC

Member of SUPSI and USI, Università della Svizzera Italiana

Member of the Vasyli Advisory Board

Chairman and Coordinator Scientific Committee New Master

Chairman The Spine I & II

Director of Endura Tape Suisse Sagl

Director of Diastema CH Sagl

Director of Fisioterapia Albasini SA

